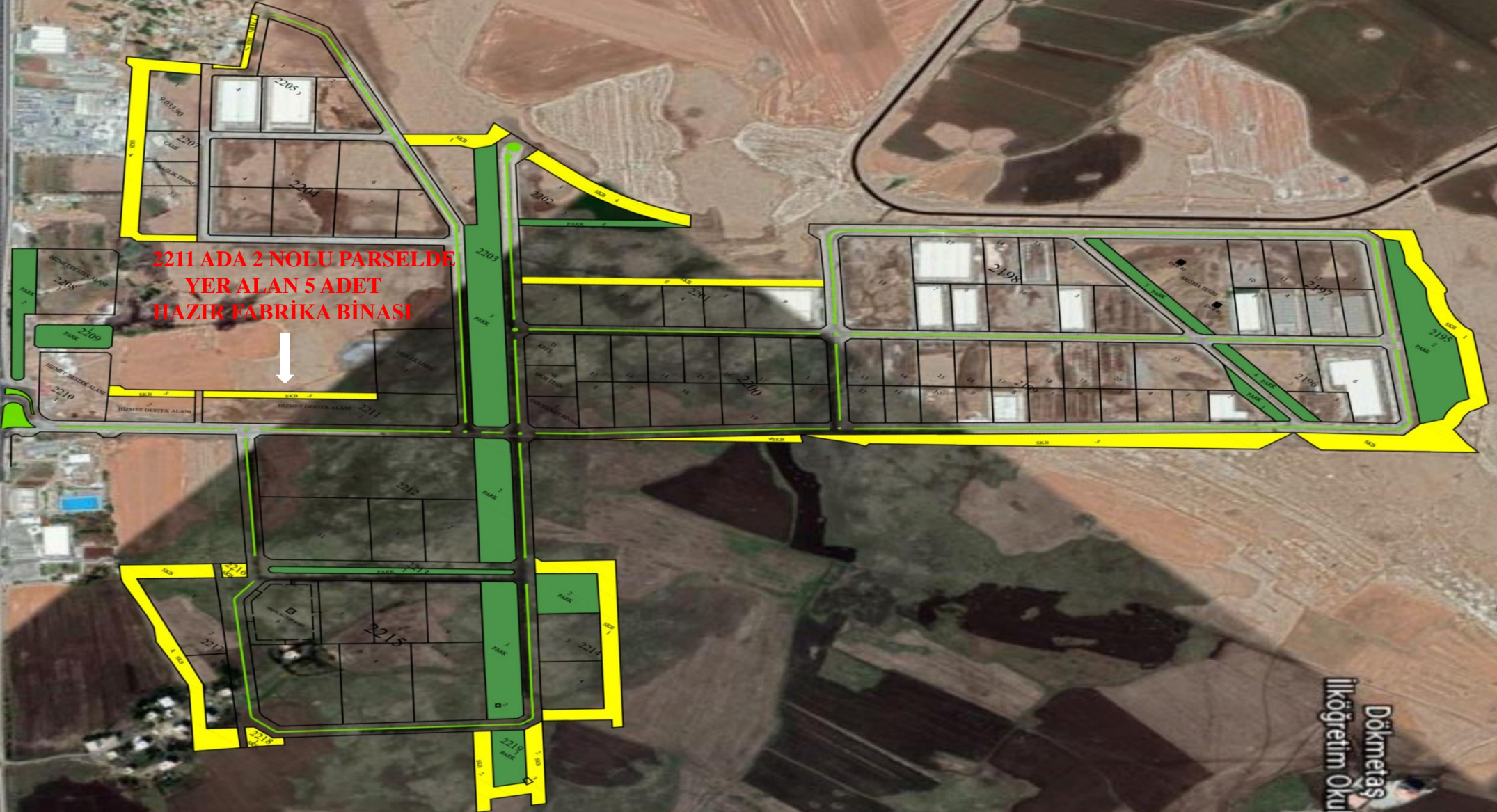


DİYARBAKIR TEKSTİL

İHTİSAS ORGANİZE SANAYİ BÖLGESİ

VAZİYET PLANI

**2211 ADA 2 NOLU PARSELDE
YER ALAN 5 ADET
HAZIR FABRİKA BİNASI**



2211 ADA 2 NOLU PARSEL ÜZERİNDE HER BİRİ 1.500 M²'LİK KAPALI ALANA SAHİP BİTİŞİK NİZAMLI OLAN A,B,C,D,E BLOKLARI OLARAK ADLANDIRILAN 5 ADET HAZIR TEKSTİL FABRİKA BİNASI

VAZİYET PLANI;

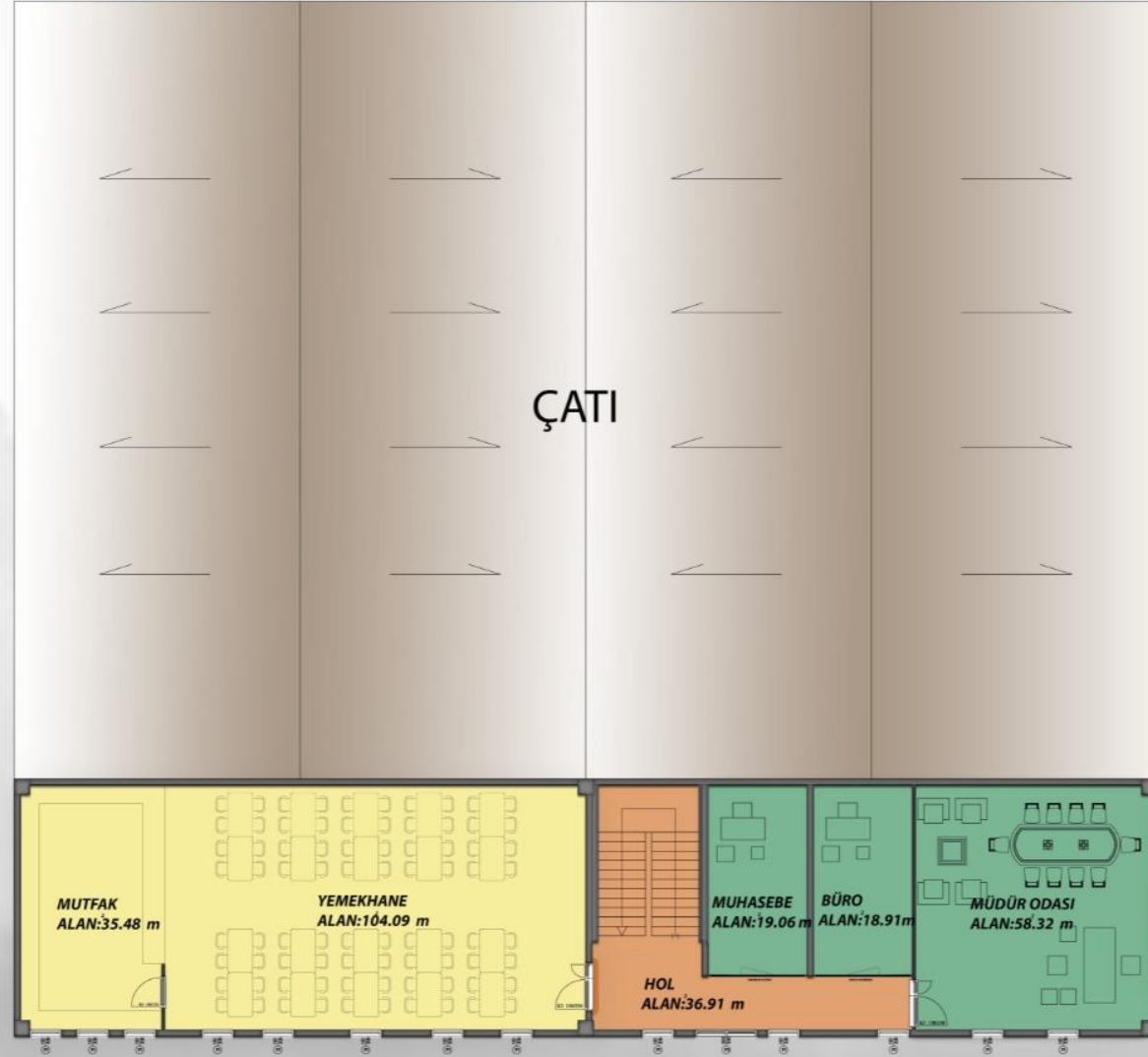


ZEMİN KAT PLANI



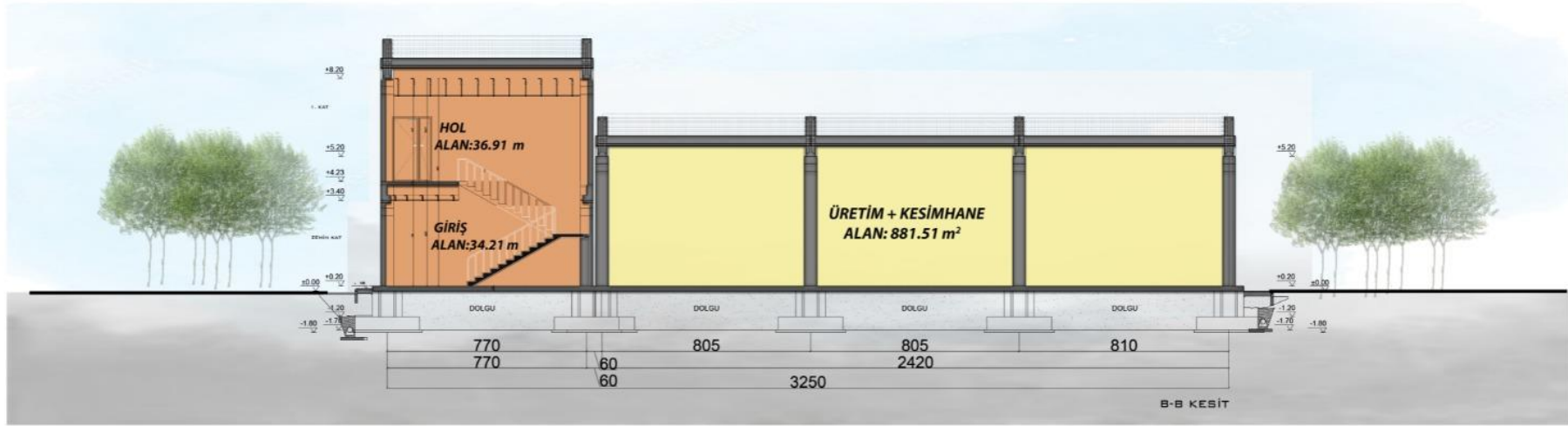
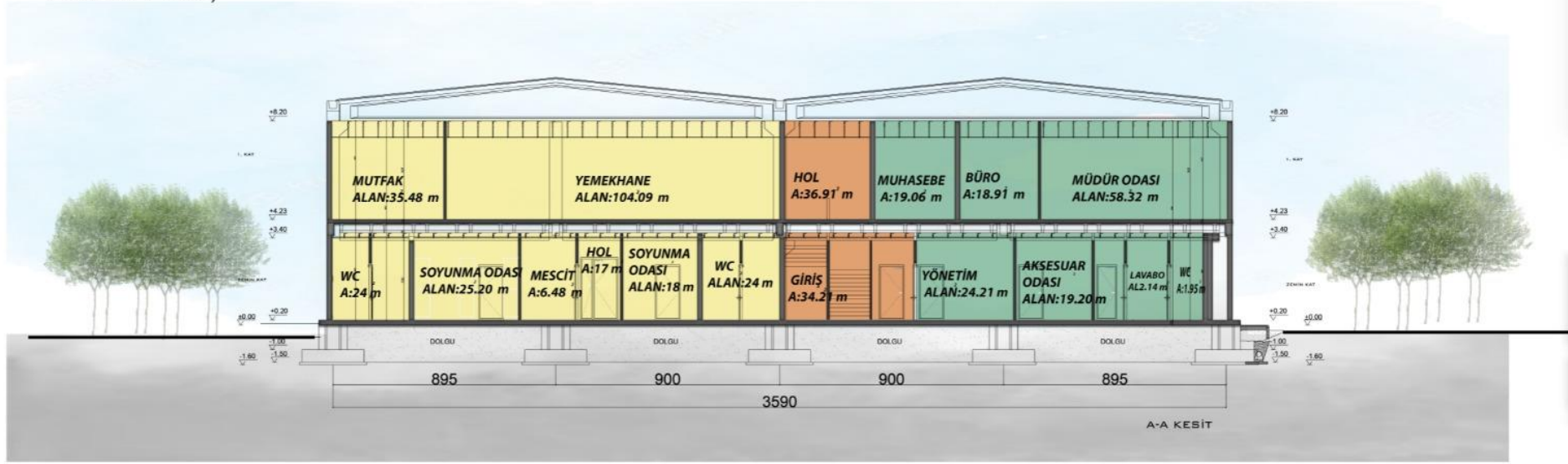
TEKSTİL OSB FABRİKA PROJESİ

1.KAT PLANI;



- PERSONEL KULANIM ALANLARI
- İDARE KULANIM ALANLARI
- ORTAK KULANIM ALANLARI

KESİTLER;



PERSONEL KULANIM ALANLARI İDARE KULANIM ALANLARI ORTAK KULANIM ALANLARI

TEKSTİL OSB FABRİKA PROJESİ

GÖRÜNÜŞLER;



TEKSTİL OSB FABRİKA PROJESİ